

MISSION RIDGE

CHOOSE EXTRAORDINARY




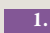







Mission Ridge is a new kind of living in East El Paso. Neighborhoods here are planned with every detail in mind. Tree-lined streets, walking trails, parks, open spaces, and expansive views of the El Paso valley are abundant. Choose to live in a place where your investment is protected, and where you and your family can be part of a growing and vibrant community in East El Paso. Choose extraordinary. Choose Mission Ridge.

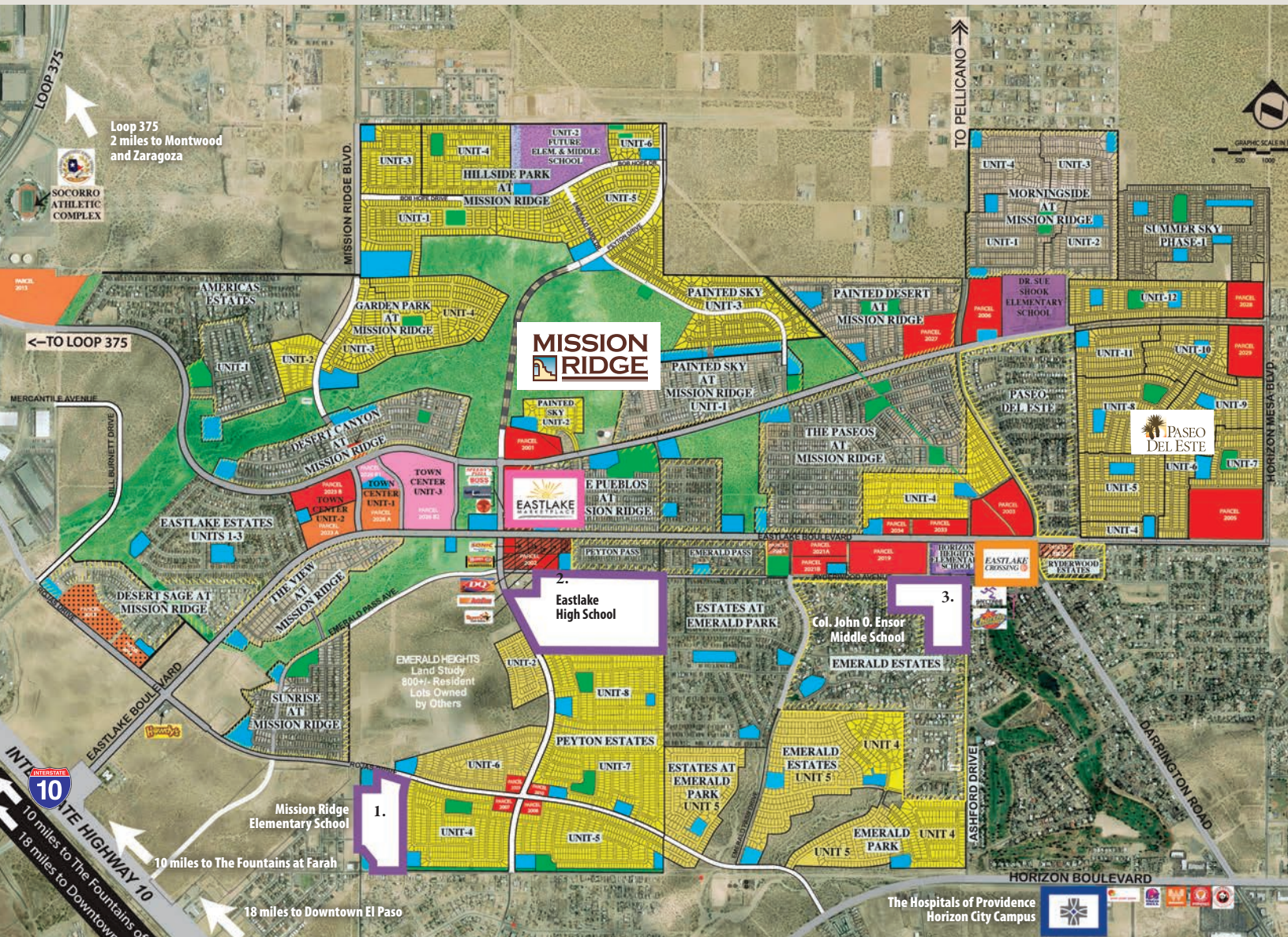
Interstate 10 at Eastlake Boulevard

MISSION RIDGE

A premier, master-planned community overlooking the Mission Valley on growing El Paso's Eastside

-  Easy Access to I-10
-  City Parks
-  The Hospitals of Providence Horizon City Campus
-  1. Mission Ridge Elementary School
-  2. Eastlake High School
-  3. Col. John O. Ensor Middle School
-  Eastlake Marketplace
-  Eastlake Crossing
-  Permanent Open Space

This conceptual vision plan is an effort to give a fair representation of the current anticipated outcome for Mission Ridge, however this vision plan is subject to change without notice. This vision plan and illustrations are for illustration purposes only, based upon current development concepts and no guarantee is made that the features depicted will be built, or, if built, will be as depicted. All renderings, maps, plans, and other images are provided to assist in visualizing the project and may not accurately represent the final land uses or actual development outcome.





MISSION RIDGE

What's New...



Eastlake Marketplace
Eastlake Boulevard & Rojas



Amazon Fulfillment Center
Eastlake Boulevard and Interstate 10



Horizon Fire Station #2
Located on Paseo Del Este Boulevard



Eastlake Crossing
Located Eastlake Boulevard near Darrington Road.



Providence Micro-Hospital
The Hospitals of Providence and Emerus, a company based in the Houston area, have opened a micro-hospital in Horizon City.



Market at Darrington
Located at Eastlake Boulevard near Darrington Road.



Emerald Park Plaza
Located at the corner of Eastlake Boulevard and Emerald Park Drive



You're this close....



GROCERY:
5
 mins



SHOPPING:
10
 mins



DINING:
5
 mins



AIRPORT:
22
 mins



ELEMENTARY
 SCHOOL:
5
 mins



FORT
 BLISS:
25
 mins



RECREATION:
5
 mins





MISSION RIDGE

Great Education Options
in the Socorro Independent
School District, serving the
Mission Ridge community



4,700+ Acres dedicated to beautiful homesites,
community parks, landscaped medians, walking paths
and open space



16 Parks Totaling 38 Acres



209 Acres commercial and office space



25 Open Space Access Points & 4 Trailheads

Mission Ridge is located in the Socorro Independent School District (SISD), which has a long and successful history serving the educational needs in East El Paso. SISD has received Texas Education Agency (TEA) recognized status for offering quality education with 43 schools from Pre-K to High School.

Socorro ISD is a large school district with nineteen elementary schools, six elementary-middle schools, eight middle schools, and five high schools. The district also has two alternative schools, one ninth-grade Academy, an Early College High School and an Early Childhood Center.

liveatmissionridge.com

Our Builder Partners Homes from the \$270s

Mission Ridge partners with homebuilders who possess a track record of success and the highest level of respect within their industries. Our building partners include:

Vista Custom Homes, Inc.
BIC Homes
Carefree Homes
Casas de Leon
Classic American Homes
Cullers Homes LLC
Deal 2 Deal Homes
Definitive Homes
Desert View Homes
Diamond Homes, LLC
Edwards Homes
Hakes Brothers EP TX LLC
ICON Custom Home Builder LLC
Moscato Homes, LLC
Palo Verde Homes
Pointe Homes
RC Baeza and Associates
Sanderson Custom Homes
Santana Homes
Saratoga Homes
Signature Homes
Tropicana Homes



liveatmissionridge.com

Proudly Developed by



MISSION RIDGE

EL PASO, TEXAS

RANKED
#11

IN THE COUNTRY

**Top 50 Master-Planned
Communities by**

JOHN BURNS
REAL ESTATE CONSULTING

Regional Sales Volume 2020

